

## INJECTOR CODING

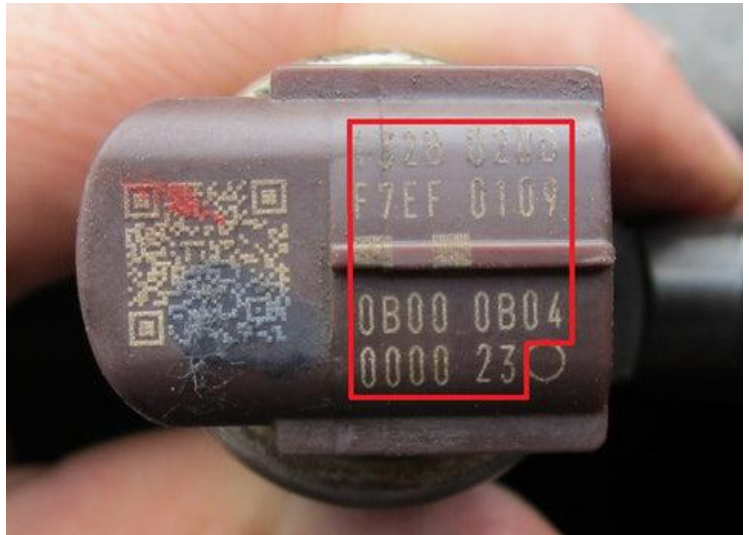
Common Rail Diesel Injectors of all brands are manufactured with very tight tolerances, however, slight variations will always occur and as such all new injectors are tested and then stamped with a coding number which is used to inform the ECU how much compensation is required to achieve the optimum in lowering emissions and provide smooth running.

The injector coding number should be noted by the technician prior to fitting the new injectors and after replacement is completed the technician can then program in the new injector numbers to replace the ones previously programmed into the ECU

Injector programming can be carried out with high level Diagnostic Scan Tools such as G-Scan or Autocom ICON.

Care must be taken when reading the identification code stamped on the injector to ensure the correct number is entered into the ECU for the corresponding cylinder. Inputting an incorrect number or fitting the wrong injectors for the engine will result in the injector failing the programming procedure.

## IDENTIFYING CALIBRATION CODES



**\*\*CORRECT INSTALLATION & CODING ARE THE RESPONSIBILITY OF THE INSTALLER-PLEASE CONTACT US IF YOU NEED ASSISTANCE**